

Engineered Guarding Solutions

GSMUSA
EASY INSTALLATION. RELIABLE PROTECTION.

GSMUSA
EASY INSTALLATION. RELIABLE PROTECTION.

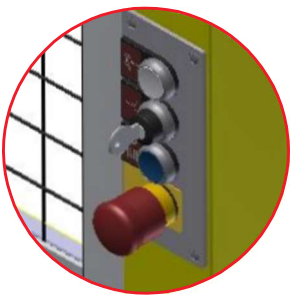
GSMUSA
EASY INSTALLATION. RELIABLE PROTECTION.

In a class of its own:

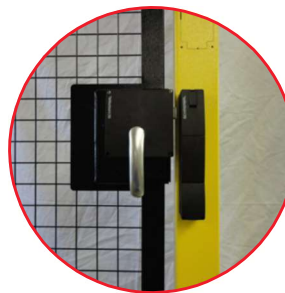
Easy To Design Easy To Install

Take the safe route. The incredibly solid and wear resistant safety fence system guarantees the highest level of quality, longevity, and safety. Furthermore, it is one of the most affordable systems on the market. It becomes apparent when looking at the initial purchase, the performance in the manufacturing environment, the maintenance, and during the easy installation.

Since all the fence elements are completely welded and pre-assembled when they arrive at your facility, the installation on site can be accomplished within hours not days!



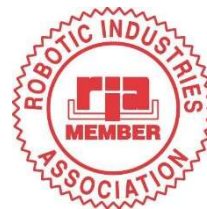
Available with integrated safety control built into the door frame



Premier safety interlock door handles



Foot pads with set screws for easy post leveling



Follows the ISO 12100-2 and the NEW RIA 15.06.2012 Regulations



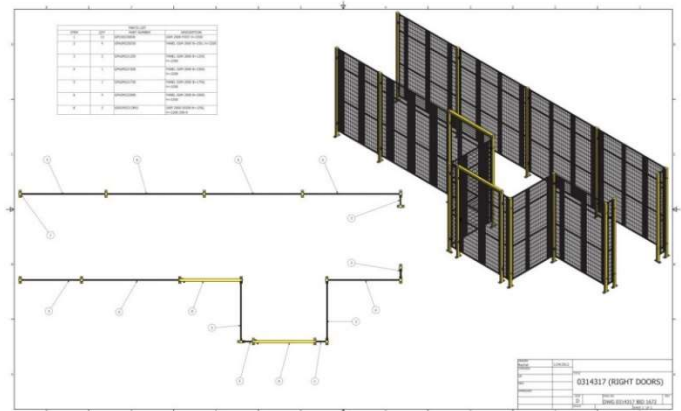
CE Compliant

Easy to design: 3D models are available to reduce your design time.

GSM also provides the following services:

- 3D Design
- Part Labeling to drawing
- On-Site Installation

GSM Configurator drawing program allows Customers access to models & part numbers (Contact GSM America for more information)



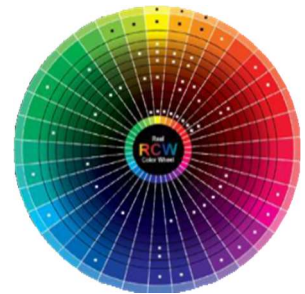
Durable Finish: Offering only the best, GSM's product comes standard with a powder coat finish to ensure longevity in the harshest environments.



Standard Panel Color RAL # 9005
Jet Black



Standard Post Color RAL # 1018
Zinc Yellow



Other Powder Coat Colors Available per request. Check RAL #

Packaged Right:

GSM takes the time and care to insure your order arrives at your facility the way it leaves ours.

Crating fees may apply.

Restocking Fee:

GSM charges a 25% restocking fee on all returned standard items.

Items can only be returned if approved by GSM America.

GSM does not accept returns on custom items.

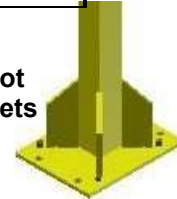
2000 Series Post Options

Height (mm)	1200 (SH)	1400 (SH)	1600 (SH)	1800 (SH)	2200 (SH)	2700 (SH)
STANDARD FOOT PAD	GP020120000	GP020140000	GP020160000	GP020180000	GP020220000	GP020270000
LARGE PLATE FOOT PAD	GP0201200LP	GP0201400LP	GP0201600LP	GP0201800LP	GP0202200LP	GP0202700LP

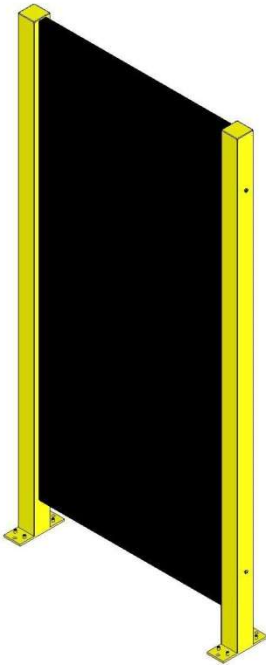
Standard Foot Pad



Large Plate Foot Pad with Gussets



2000 Series Sheet Metal Panels



The sheet metal panels are made of a 2mm heavy duty sheet metal, bent and welded in the four corners for a sturdy design. They are fastened to the posts utilizing socket head cap screws. Custom viewing windows are an option and GSM requires the customer to provide a drawing indicating size and position. The standard viewing glass is 6mm polycarbonate.

Panel Width - Up To 1500mm
Panel Height - Up To 2200mm

Contact factory for custom height options

Height [mm] Width [mm]	1800 (SH)	2200 (SH)
	250 (SW) System width	GPA2S180250 160 (w) x 1650 (h)
300 (SW) System width	GPA2S180300 210 (w) x 1650 (h)	GPA2S220300 210 (w) x 2050 (h)
400 (SW) System width	GPA2S180400 310 (w) x 1650 (h)	GPA2S220400 310 (w) x 2050 (h)
500 (SW) System width	GPA2S180500 410 (w) x 1650 (h)	GPA2S220500 410 (w) x 2050 (h)
600 (SW) System width	GPA2S180600 510 (w) x 1650 (h)	GPA2S220600 510 (w) x 2050 (h)
700 (SW) System width	GPA2S180700 610 (w) x 1650 (h)	GPA2S220700 610 (w) x 2050 (h)
750 (SW) System width	GPA2S180750 660 (w) x 1650 (h)	GPA2S220750 660 (w) x 2050 (h)
800 (SW) System width	GPA2S180800 710 (w) x 1650 (h)	GPA2S220800 710 (w) x 2050 (h)
900 (SW) System width	GPA2S180900 810 (w) x 1650 (h)	GPA2S220900 810 (w) x 2050 (h)
1000 (SW) System width	GPA2S181000 910 (w) x 1650 (h)	GPA2S221000 910 (w) x 2050 (h)
1250 (SW) System width	GPA2S181250 1160 (w) x 1650 (h)	GPA2S221250 1160 (w) x 2050 (h)
1500 (SW) System width	GPA2S181500 1410 (w) x 1650 (h)	GPA2S221500 1410 (w) x 2050 (h)

2000 Series Weld Screen Option

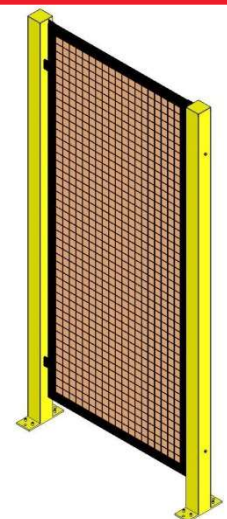
WS- Welding Screen Option

The weld screen option includes a pre-cut UV vinyl protection screen with a sheet metal frame securing the vinyl to the back side of the panel or door frame.

Panel Width - Up To 1500mm
Panel Height - Up To 2200mm
Custom Sizes Consult with Factory

Standard Colors

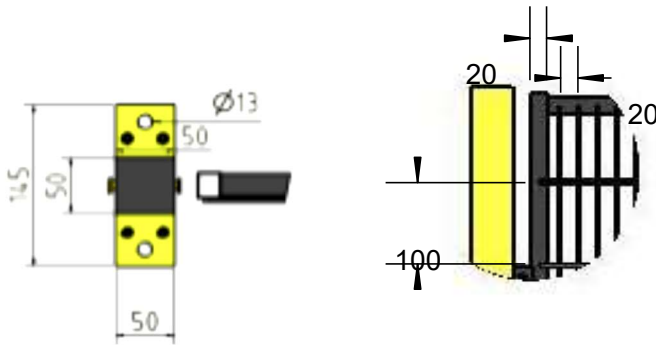
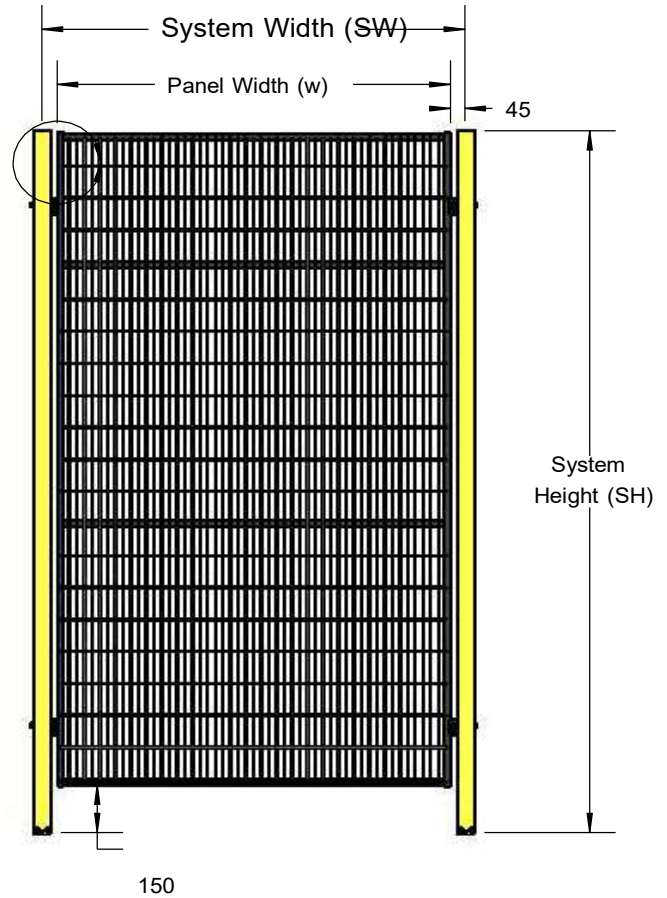
	RED/ORANGE
	DARK GREEN



GSM 2000 Series

GSM's 2000 series guarding is not only a solid and safe system, but also a cost effective solution. The panel frames are an all welded tubular design with multiple middle supports which don't allow the frame to flex like traditional angle iron system. The welded wire mesh is a 2mm diameter wire that is welded at all junctions. Posts are a 50mm square tube with a choice between a two or four anchor bolt foot pad. All foot pads have four threaded holes for leveling screws which are provided by GSM.

The panels and posts come with the quick assembly fittings pre-attached.



Custom Height available upon request

Height (mm) Width (mm)	1200 (SH)	1400 (SH)	1600 (SH)	1800 (SH)	2200 (SH)	2700 (SH)
250 (SW)	160 (w) x 1050 (h)	160 (w) x 1250 (h)	160 (w) x 1450 (h)	160 (w) x 1650 (h)	160 (w) x 2050 (h)	160 (w) x 2550 (h)
System Width	GPA2M120250	GPA2M140250	GPA2M160250	GPA2M180250	GPA2M220250	GPA2M270250
300 (SW)	210 (w) x 1050 (h)	210 (w) x 1250 (h)	210 (w) x 1450 (h)	210 (w) x 1650 (h)	210 (w) x 2050 (h)	210 (w) x 2550 (h)
System Width	GPA2M120300	GPA2M140300	GPA2M160300	GPA2M180300	GPA2M220300	GPA2M270300
400 (SW)	310 (w) x 1050 (h)	310 (w) x 1250 (h)	310 (w) x 1450 (h)	310 (w) x 1650 (h)	310 (w) x 2050 (h)	310 (w) x 2550 (h)
System Width	GPA2M120400	GPA2M140400	GPA2M160400	GPA2M180400	GPA2M220400	GPA2M270400
500 (SW)	410 (w) x 1050 (h)	410 (w) x 1250 (h)	410 (w) x 1450 (h)	410 (w) x 1650 (h)	410 (w) x 2050 (h)	410 (w) x 2550 (h)
System Width	GPA2M120500	GPA2M140500	GPA2M160500	GPA2M180500	GPA2M220500	GPA2M270500
600 (SW)	510 (w) x 1050 (h)	510 (w) x 1250 (h)	510 (w) x 1450 (h)	510 (w) x 1650 (h)	510 (w) x 2050 (h)	510 (w) x 2550 (h)
System Width	GPA2M120600	GPA2M140600	GPA2M160600	GPA2M180600	GPA2M220600	GPA2M270600
700 (SW)	610 (w) x 1050 (h)	610 (w) x 1250 (h)	610 (w) x 1450 (h)	610 (w) x 1650 (h)	610 (w) x 2050 (h)	610 (w) x 2550 (h)
System Width	GPA2M120700	GPA2M140700	GPA2M160700	GPA2M180700	GPA2M220700	GPA2M270700
750 (SW)	660 (w) x 1050 (h)	660 (w) x 1250 (h)	660 (w) x 1450 (h)	660 (w) x 1650 (h)	660 (w) x 2050 (h)	660 (w) x 2550 (h)
System Width	GPA2M120750	GPA2M140750	GPA2M160750	GPA2M180750	GPA2M220750	GPA2M270750
800 (SW)	710 (w) x 1050 (h)	710 (w) x 1250 (h)	710 (w) x 1450 (h)	710 (w) x 1650 (h)	710 (w) x 2050 (h)	710 (w) x 2550 (h)
System Width	GPA2M120800	GPA2M140800	GPA2M160800	GPA2M180800	GPA2M220800	GPA2M270800
900 (SW)	810 (w) x 1050 (h)	810 (w) x 1250 (h)	810 (w) x 1450 (h)	810 (w) x 1650 (h)	810 (w) x 2050 (h)	810 (w) x 2550 (h)
System Width	GPA2M120900	GPA2M140900	GPA2M160900	GPA2M180900	GPA2M220900	GPA2M270900
1000 (SW)	910 (w) x 1050 (h)	910 (w) x 1250 (h)	910 (w) x 1450 (h)	910 (w) x 1650 (h)	910 (w) x 2050 (h)	910 (w) x 2550 (h)
System Width	GPA2M121000	GPA2M141000	GPA2M161000	GPA2M181000	GPA2M221000	GPA2M271000
1250 (SW)	1160 (w) x 1050 (h)	1160 (w) x 1250 (h)	1160 (w) x 1450 (h)	1160 (w) x 1650 (h)	1160 (w) x 2050 (h)	1160 (w) x 2550 (h)
System Width	GPA2M121250	GPA2M141250	GPA2M161250	GPA2M181250	GPA2M221250	GPA2M271250
1500 (SW)	1410 (w) x 1050 (h)	1410 (w) x 1250 (h)	1410 (w) x 1450 (h)	1410 (w) x 1650 (h)	1410 (w) x 2050 (h)	1410 (w) x 2550 (h)
System Width	GPA2M121500	GPA2M141500	GPA2M161500	GPA2M181500	GPA2M221500	GPA2M271500
1750 (SW)	1660 (w) x 1050 (h)	1660 (w) x 1250 (h)	1660 (w) x 1450 (h)	1660 (w) x 1650 (h)	1660 (w) x 2050 (h)	1660 (w) x 2550 (h)
System Width	GPA2M121750	GPA2M141750	GPA2M161750	GPA2M181750	GPA2M221750	GPA2M271750
2000 (SW)	1910 (w) x 1050 (h)	1910 (w) x 1250 (h)	1910 (w) x 1450 (h)	1910 (w) x 1650 (h)	1910 (w) x 2050 (h)	1910 (w) x 2550 (h)
System Width	GPA2M122000	GPA2M142000	GPA2M162000	GPA2M182000	GPA2M222000	GPA2M272000

STOCK ITEM
NON STOCK ITEM

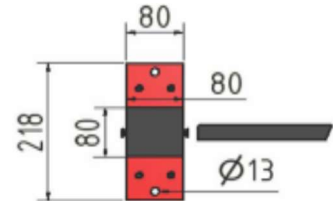
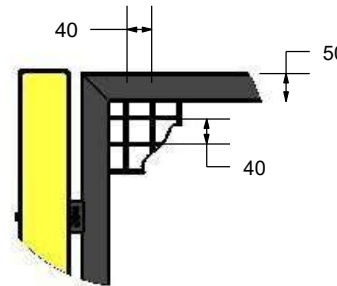
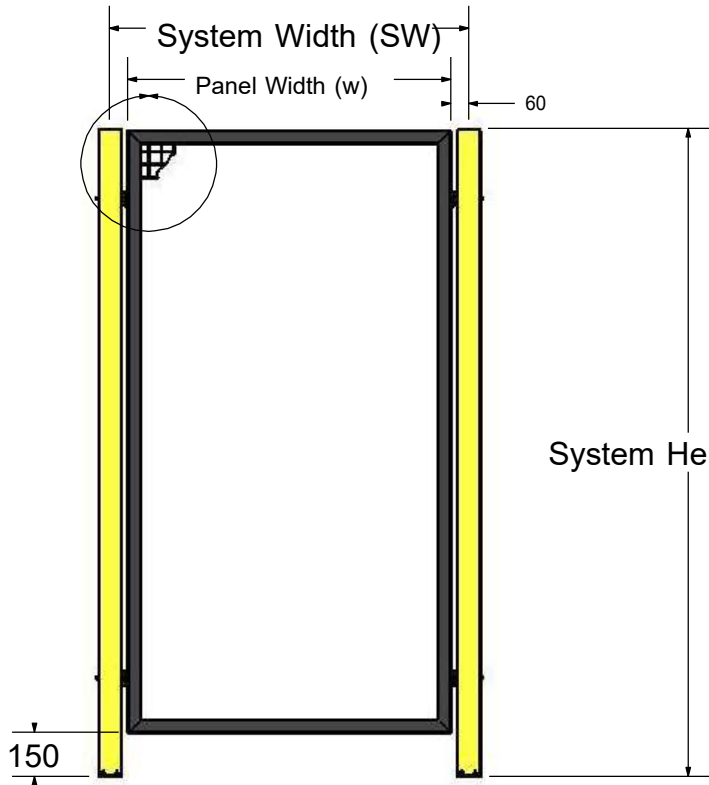
Will use (2) panels to make SH 2700mm

GSM 3000 Series

GSM's 3000 series guarding is for the customer who wants their facility or equipment to stand out from the rest. With the impressive quality and look of the roll-formed frame panels and the sturdy 80mm square posts it's sure to set you apart!

The panel is a completely roll-formed frame that allows for minimal twisting of the frame and allows for wider panels. The welded wire mesh is a 2.5mm wire that is welded at all junctions. Posts stand out with a 80mm square tubing with a choice between a two or four anchor foot pad. All foot pads have four threaded holes for leveling screws which are provided by GSM.

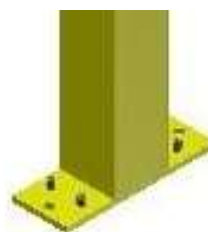
The panels and posts come with the quick assembly fittings pre-attached.



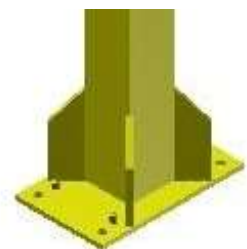
Height [mm]	1800 (SH)	2200 (SH)
300 (SW)	180 (w) x 1650 (h)	180 (w) x 2050 (h)
System width	GPA3M180300	GPA3M203000
500 (SW)	380 (w) x 1650 (h)	380 (w) x 2050 (h)
System width	GPA3M180500	GPA3M220500
750 (SW)	630 (w) x 1650 (h)	630 (w) x 2050 (h)
System width	GPA3M180750	GPA3M220750
1000 (SW)	880 (w) x 1650 (h)	880 (w) x 2050 (h)
System width	GPA3M181000	GPA3M221000
1250 (SW)	1130 (w) x 1650 (h)	1130 (w) x 2050 (h)
System width	GPA3M181250	GPA3M221250
1500 (SW)	1380 (w) x 1650 (h)	1380 (w) x 2050 (h)
System width	GPA3M181500	GPA3M221500
1750 (SW)	1630 (w) x 1650 (h)	1630 (w) x 2050 (h)
System width	GPA3M181750	GPA3M221750
2000 (SW)	1880 (w) x 1650 (h)	1880 (w) x 2050 (h)
System width	GPA3M182000	GPA3M222000
2250 (SW)	2130 (w) x 1650 (h)	2130 (w) x 2050 (h)
System width	GPA3M182250	GPA3M222250
2500 (SW)	2380 (w) x 1650 (h)	2380 (w) x 2050 (h)
System width	GPA3M182500	GPA3M222500
3000 (SW)	2880 (w) x 1650 (h)	2880 (w) x 2050 (h)
System width	GPA3M183000	GPA3M223000

Height (mm)	1800 (H)	2200 (H)
STANDARD FOOT PAD	GPO30180000	GPO30220000
LARGE PLATE FOOT PAD	GPO301800LP	GPO302200LP

Stock Items

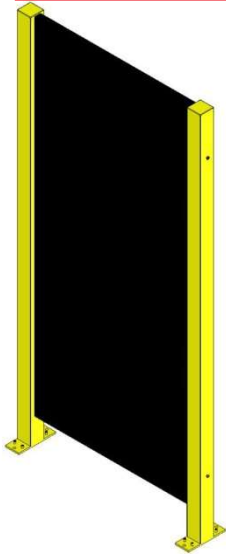


Standard Foot Pad



Large Plate Foot Pad

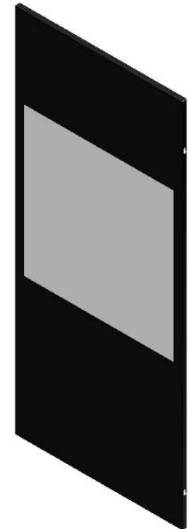
3000 Series Sheet Metal Panels



The sheet metal panels are made of a 2mm heavy duty sheet metal bent and welded in the four corners for a sturdy design. The panels are fastened to the posts utilizing a socket head cap screw. Custom viewing windows are an option and GSM requires the customer to provide a drawing indicating size and position. The standard viewing glass is 6mm polycarbonate.

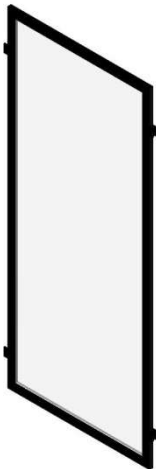
Panel Width - Up To 1500mm
Panel Height - Up To 2200mm

Taller heights are achieved by using two panels.



3000 Series Polycarbonate Panels

Sheet metal with polycarbonate window



The standard polycarbonate panel utilizes a non-UV protected 4mm thick material that secures into the GSM 3000 frame with metal support strips and self-tapping screws. This allows the panels to be easily removed from the inside to be replaced later. UV protection and 6mm thickness can be ordered as an option. Call factory for P/N's and pricing.

Polycarbonate doors are available in door section of brochure

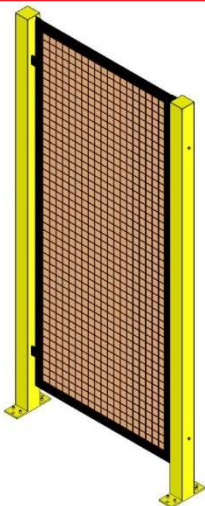


Height [mm]	2200 (H)
300 (W)	GPA3L220300
System width	180 (w) x 2050
500 (W)	GPA3L220500
System width	380 (w) x 2050
750 (W)	GPA3L220750
System width	630 (w) x 2050
1000 (W)	GPA3L221000
System width	880 (w) x 2050
1250 (W)	GPA3L221250
System width	1130 (w) x
1500 (W)	GPA3L221500
System width	1380 (w) x

GHWBRPO:

BRACKET, POLYCARBONATE,
4 PER PANEL

3000 Series Weld Screen Option



WS- Welding Screen Option

The weld screen option includes a pre-cut UV vinyl protection screen with a sheet metal frame securing the vinyl to the back side of the panel or door frame.

Panel Width - Up To 1500mm
Panel Height - Up To 2200mm
Custom Sizes Consult with Factory

Red/Orange



Green



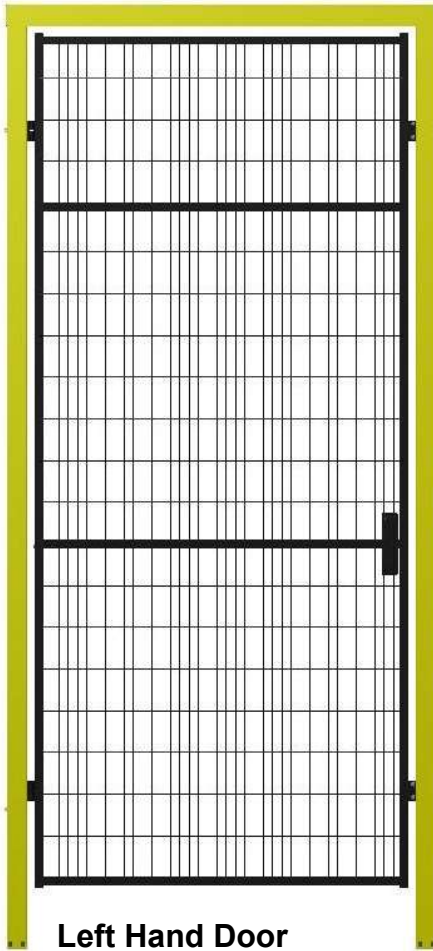
3000 Series Wash Down Option

WD- Wash Down Option

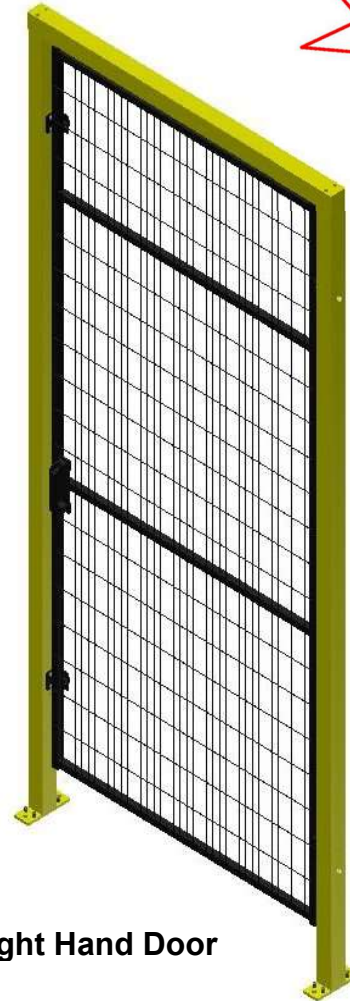
The wash down option comes with all panels & posts holes plugged with a flat plastic plug, stainless steel leveling screws, and stainless steel shim plates for posts.

GSM Single Hinged Door

**NO ASSEMBLY
REQUIRED!**



Left Hand Door



Right Hand Door

GDO 2 M 22 12 R 01 **
 1 2 3 4 5 6 7 8

1. Style

- O Hinged/Double Hinged
- S Sliding Door

2. Series

- 2000
- 3000

3. Panel Material

- M Mesh
- L Polycarbonate
- S Sheet Metal

4. System Height

- 1600 No Header
- 1800 No Header
- 2200
- 2700

5. System Width

- 1000mm
- 1250mm
- 1500mm

6. Door Hand

- Right
- Left

7. Handle Type

- 01 Standard Handle
- 02 Latch & Twist Keyed
(Option to have blind cylinder instead of keyed)
- 03 Schmersal AZM 200 Interlock Handle

8. Options

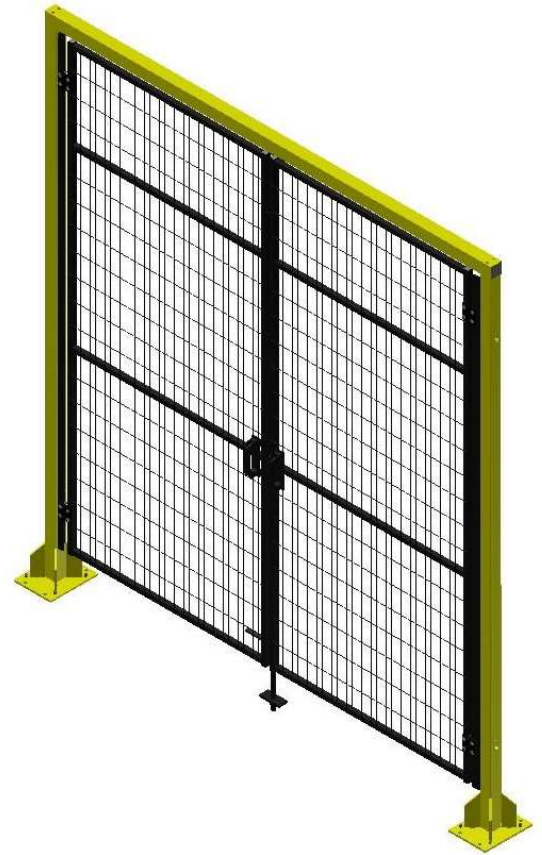
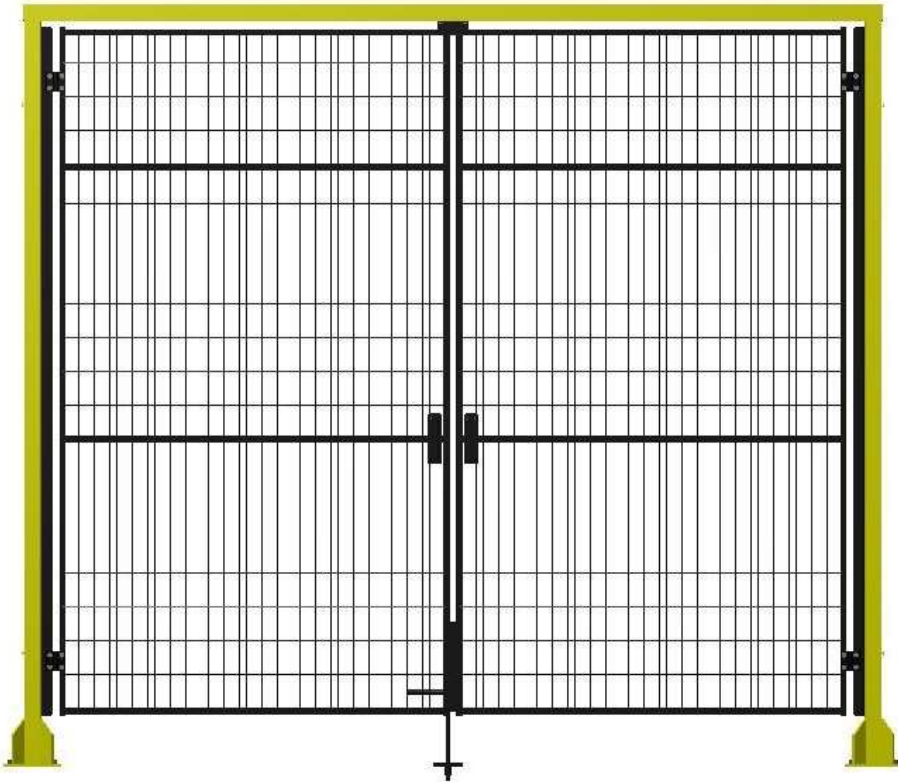
- CS Cantilevered Sliding Door
- WS Weldscreen (R – Red, G- Green)
- AW AZM Pre-wired w/ Push Buttons & Connectors

Comes Pre-Assembled!

GSM's single hinge doors are pre-assembled from the factory if shipping allows. The doors come standard with cross header to stiffen the door posts. All doors have an adjustable closed door stop.

**NO ASSEMBLY
REQUIRED!**

GSM Double Hinged



GDO2M2220D01DH: EXAMPLE PART NUMBER

Double Hinge Doors are offered in both GSM 2000 & GSM 3000 Series at System Height 2200MM & System Height 2700MM.

Standard System Widths:

2000MM
2500MM
3000MM

Handle Options:

01 – Standard Handle
03 – Schmersal AZM 200
03AW – Schmersal AZM 200 Prewired Option

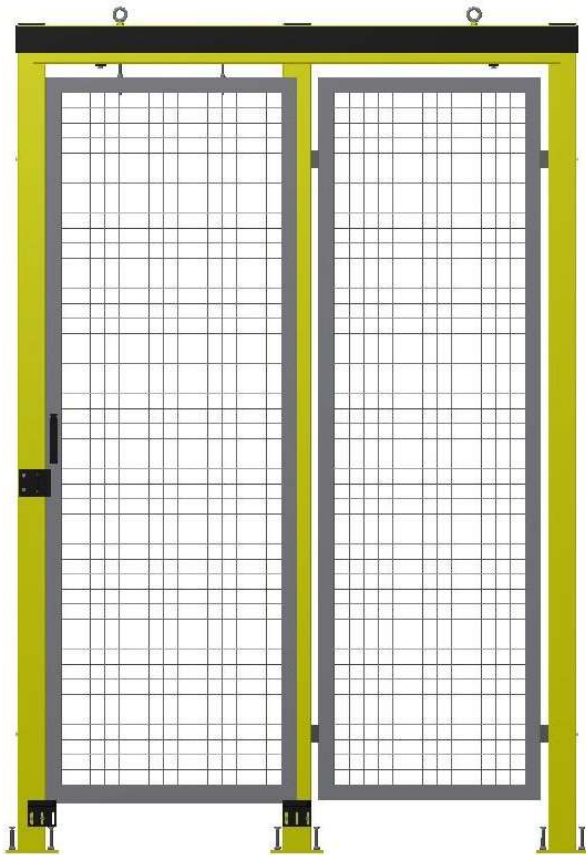
Comes Pre-Assembled !

GSM's double hinge doors are pre-assembled from the factory, if shipping allows. Doors come standard with a cross header to stiffen the door posts. All doors have an adjustable door stop and floor pin to secure the door panels while closed.

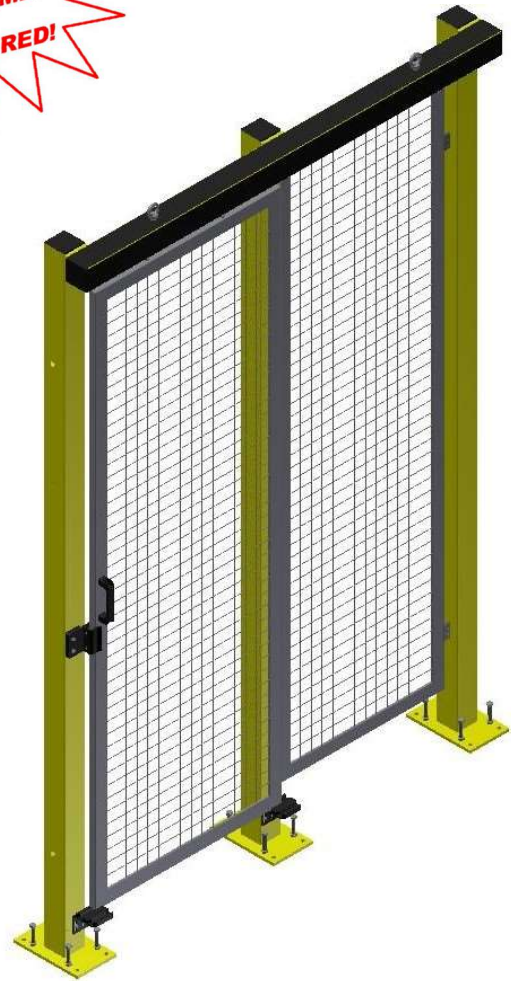
*Custom Heights & Widths available
Per request

GSM Sliding

**NO ASSEMBLY
REQUIRED!**



Left to Right Slider Shown
(Right Hand Door)



GDS3M2220R01: EXAMPLE PART NUMBER

Sliding Doors are offered in both GSM 2000 & GSM 3000 Series at System Height 2200MM & System Height 2700MM.

Standard System Widths:

2000MM
2500MM
3000MM

Handle Options:

01 – Standard Handle
03 – Schmersal AZM 200
03AW – Schmersal AZM 200 Prewired Option

Right Hand: Door slides from Left to Right to open

Left Hand: Door slides from Right to Left to open

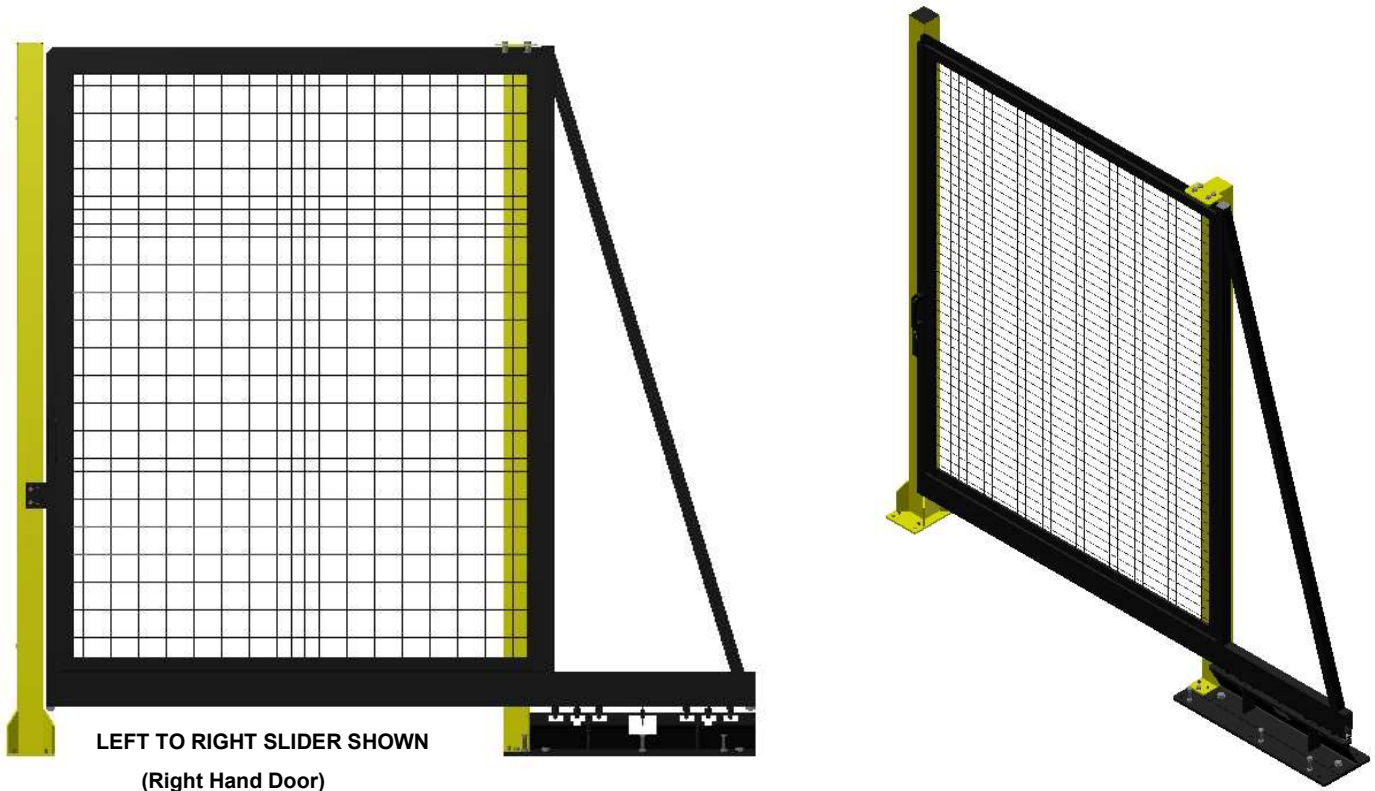
Comes Pre-Assembled!

GSM's sliding doors are pre-assembled from the factory, if shipping allows. The doors come standard with a steel header track, and the door sliding apparatus utilizes industrial steel roller bearings for a smooth and reliable motion. The sliding door has an adjustable magnetic door catch system to secure the door while closed

*Custom Heights & Widths available
Per request

**NO ASSEMBLY
REQUIRED!**

GSM Cantilever Sliding Door



LEFT TO RIGHT SLIDER SHOWN
(Right Hand Door)

GDS3M2210R01CS: EXAMPLE PART NUMBER

Cantilever Sliding Doors are offered in both GSM 2000 & GSM 3000 Series at System Height 2200MM & System Height 2700MM.

Standard System Widths:

1000MM
1250MM
1500MM
2000MM

Handle Options:

01 – Standard Handle
03 – Schmersal AZM 200
03AW – Schmersal AZM 200 Prewired Option

NO HEADER!

GSM's cantilevered sliding doors are a robust solution for applications where you cannot have a header support structure. The door sliding apparatus utilizes 26 industrial steel roller bearings mounted on the base plate for a smooth and reliable motion. GSM offers many different configurations including cascading doors for restricted space applications. The sliding door has an adjustable magnetic door catch system to secure the door while closed. If shipping allows, the doors will arrive pre-assembled from the factory. Door needs minor set up work.

*Custom Heights & Widths available per request

Right Hand: Door slides from Left to Right to open

Left Hand: Door slides from Right to Left to open

GSM Door Options

Standard Handle Options



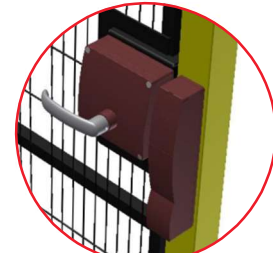
01 Standard Door Handle

The 01 handle is a basic high strength plastic handle. The door relies on industrial magnets for the positive stop and holding the door shut. This handle should be used with another mechanical interlock device.



02 Latch Handle With or Without Keyed Entry

The 02 handle has a handle on the outside and a handle on the inside that will open the door even if the door is locked. The handle system can be ordered with or without a keyed lock.



03 Schmersal Interlock Door Handle

The 03 handle is a dual redundant solenoid interlock handle system with the emergency release on the inside. The interlock has a door closed sensor and a tongue sensor to indicate that the door is latched.

Power To Unlock is Standard
Option for Power to Lock Available
(P/N GHWELAZSOPUEX)

AW Option for the 03 AZM



Wired To Multi-Pin Connector

GHHWARTF – FEMALE CONNECTOR
GHHWARTM – MALE CONNECTOR

The AW option includes Pre-wired Schmersal AZM Interlock
Pre-wired Integrated Safety Control Pendant (push buttons as described)
Pre-wired 24pin Male Harting plug mounted to back side of door post
Female side of Harting plug without cable

Request To Enter

Trap Key

Reset

E-Stop

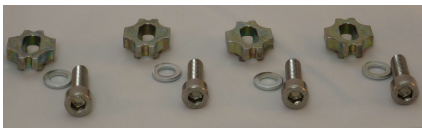


SCHMERSAL AZM
LOCKOUT TAGS CAN BE
MOUNTED ON DOOR BY
GSM OR CUSTOMER
P/N: GHWLOCKOUT

PRE-WIRED CONNECTOR FOR HARTING PLUG	
GELWHPODODH030	30ft Cable With Female Harting 24 Leads
GELWHPODODH060	60ft Cable With Female Harting 24 Leads
GELWHPODODH120	120ft Cable With Female Harting 24 Leads



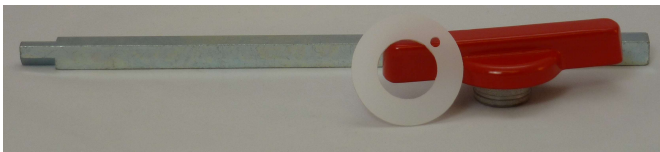
- GHWELAZACL**: LEFT ACTUATOR (AZM 200-B30-LT-2719)
- GHWELAZACR**: RIGHT ACTUATOR (AZM 200-B30-RT-2719)
- GHWELAZ201AL**: LEFT ACTUATOR (AZM201-B30-LT-2719)
- GHWELAZ201AR**: RIGHT ACTUATOR (AZM201-B30-RT-2719)



GHWELAZMOBL: ACTUATOR MOUNTING KIT



GHWHA0003: HANDLE FOR AZM 200/201, SILVER



GHWELKK: KIT, RED RELEASE KNOB



GHWELKM: AZM, MOUNTING KIT RED RELEASE KNOB

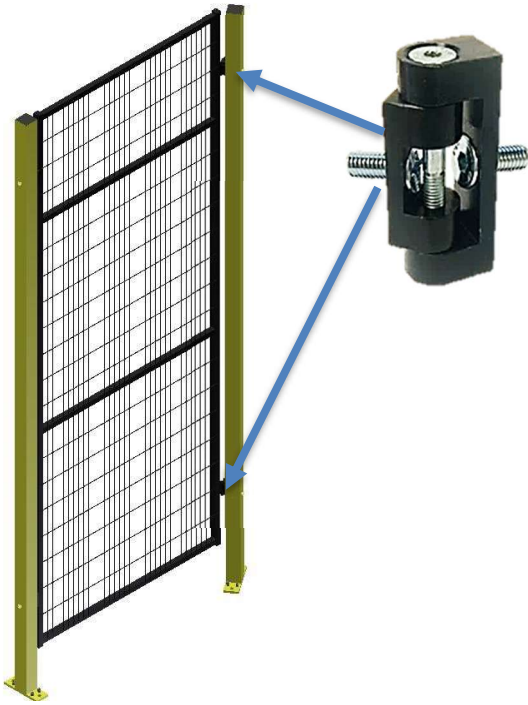


- GHWELAZSOPU**: SOLENOID, AZM 200, **POWER TO UNLOCK** (AZM 200CC-T-1P2PW-2719) **(GSM STANDARD)**
- GHWELAZSOPL**: SOLENOID, AZM 200, **POWER TO LOCK** (AZM 200CC-T-1P2PWA-2719)
- GHWELAZ201SOPU**: SOLENOID, AZM 201, **POWER TO UNLOCK** (AZM 201CC-T-1P2PW-2719) **(GSM STANDARD)**
- GHWELAZ201SOPO**: SOLENOID, AZM 201, **POWER TO LOCK** (AZM 201CC-T-1P2PWA-2719)



GHWELAZMKEY: KEY, OVER RIDE FOR AZM 200/201 QTY 1 KEY

Hardware



Angled Quick Assembly Fitting (Fittings must be ordered separately from panels)
P/N GHWBL007

Straight Quick Assembly Fitting
 (Fittings are pre-assembled to the panels)



GHWBL005L02	Standard Straight Assembly Fitting Left
GHWBL005R02	Standard Straight Assembly Fitting Right

Special M6 Shoulder Bolt to Mate Assembly Fitting To Post (Qty 1 per Pack)
P/N GHWSC001



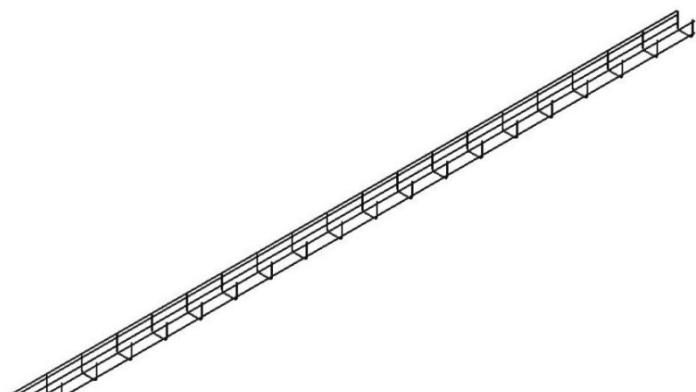
Other Hardware	
GHWBO000I	3/8"x3" Anchor Bolts {Qty 1 per Pack}
GHWSM200	GSM 2000 Post Shim Plate
GHWSM300	GSM 3000 Post Shim Plate

Wire Management

Cable Channel

The wire management comes in a 45mm x 45mm design and will mount to the bottom of the GSM 3000 series panels. Only sold in 2M lengths (hardware not included)

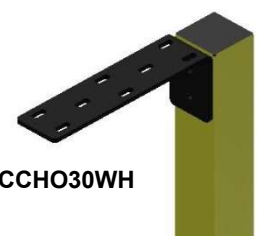
GHWCC002	2M 45mmx45mm Cable Channel
-----------------	----------------------------



GHWCCHO34WH



GHWCCHO30WH



Cable Tray Support

The cable tray support can be used for both the GSM 2000 and 3000 series. The support deck is 185mm x 50mm. GSM offers both line post and corner post supports (hardware for mounting to post included).

SPECIAL CUT OUT PANELS

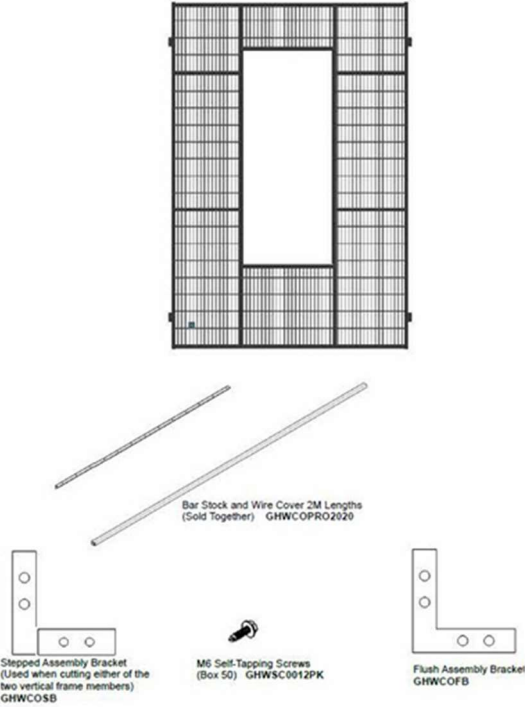
Flexibility

GSM Flex Kits - GSM offers the flexibility that you require in the field. The flex kits come in width and height adjustment. The kits only require basic tools to modify the panels in the field.

GSM offers panel cutout kits for on-site modifications.

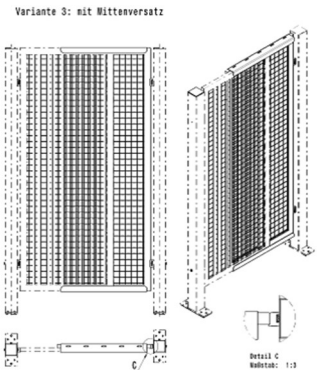
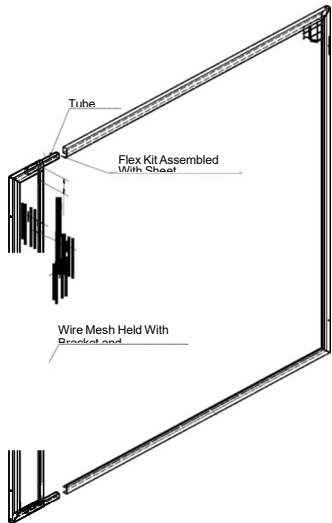
GSM 2000 Series

GSM 2000 SERIES FLEXKITS	
P/N	DESCRIPTION
GHWFLEX2H	GSM 2000, FLEX KIT, HEIGHT ADJUSTMENT (CUSTOMER WILL ADJUST PANEL)
GHWFLEX2W	GSM 2000, FLEX KIT, WIDTH ADJUSTMENT (CUSTOMER WILL ADJUST PANEL)
GHWFLEX2HI	GSM 2000, FLEX KIT, HEIGHT ADJUSTMENT (GSM INSTALL ON PANEL)
GHWFLEX2WI	GSM 2000, FLEX KIT, WIDTH ADJUSTMENT (GSM INSTALL ON PANEL)



GSM 3000 Series

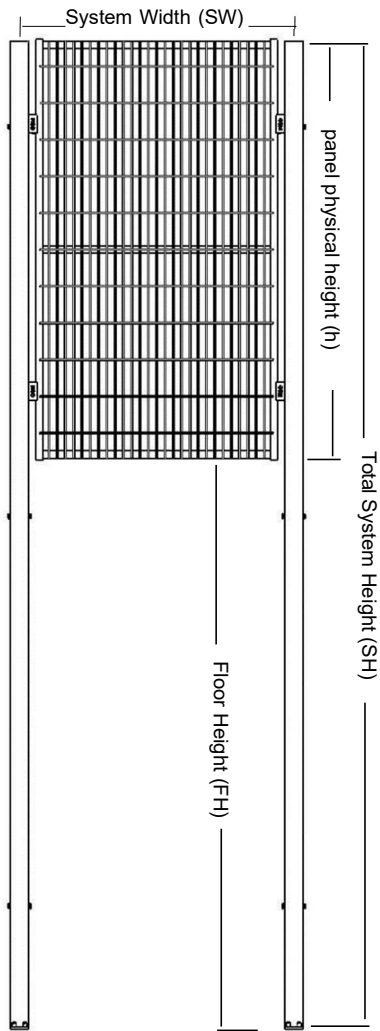
3000 SERIES FLEX KIT FOR WIDTH ADJUSTMENT	
GPA3M18FLEX	PANEL KIT,GSM 3000,SYSTEM HEIGHT 1800MM,WIDTH ADJUST
GPA3M22FLEX	PANEL KIT,GSM 3000,SYSTEM HEIGHT 2200MM,WIDTH ADJUST
3000 SERIES FLEX KIT FOR HEIGHT ADJUSTMENT	
GPA3M03FLEX	PANEL KIT,GSM 3000,WIDTH 300MM,HEIGHT ADJUSTMENT
GPA3M05FLEX	PANEL KIT,GSM 3000,WIDTH 500MM,HEIGHT ADJUSTMENT
GPA3M07FLEX	PANEL KIT,GSM 3000,WIDTH 750MM,HEIGHT ADJUSTMENT
GPA3M10FLEX	PANEL KIT,GSM 3000,WIDTH 1000MM,HEIGHT ADJUSTMENT
GPA3M12FLEX	PANEL KIT,GSM 3000,WIDTH 1250MM,HEIGHT ADJUSTMENT
GPA3M15FLEX	PANEL KIT,GSM 3000,WIDTH 1500MM,HEIGHT ADJUSTMENT
GPA3M17FLEX	PANEL KIT,GSM 3000,WIDTH 1750MM,HEIGHT ADJUSTMENT
GPA3M20FLEX	PANEL KIT,GSM 3000,WIDTH 2000MM,HEIGHT ADJUSTMENT



GSM 3000 TELESCOPING PANEL ADJUSTMENT KITS

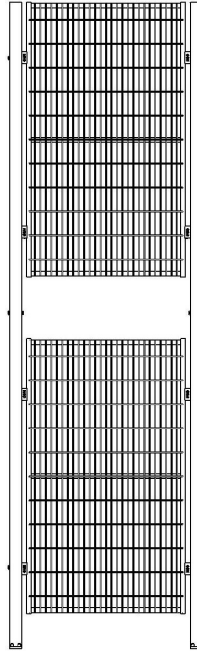
The GSM 3000 telescoping panel adjustment kits are used to make the exact panel size you need. Use two GSM 3000 series standard width panels, SW 300mm to SW 1000mm, set to correct size on trays and screw trays to panels on top & bottom of panels.

Custom Panels & Posts Terminology

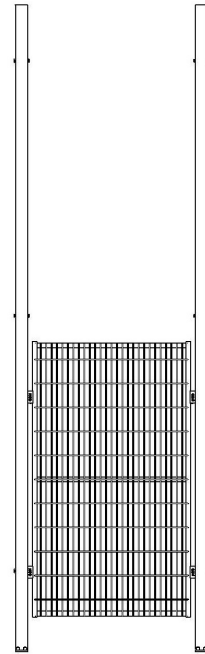


GSM has a wide array of options to tackle even the most complex of your guarding needs. If your project needs customization please consult with the factory for assistance.

Example 2



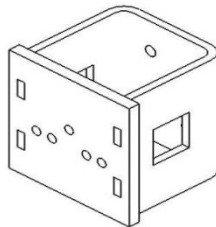
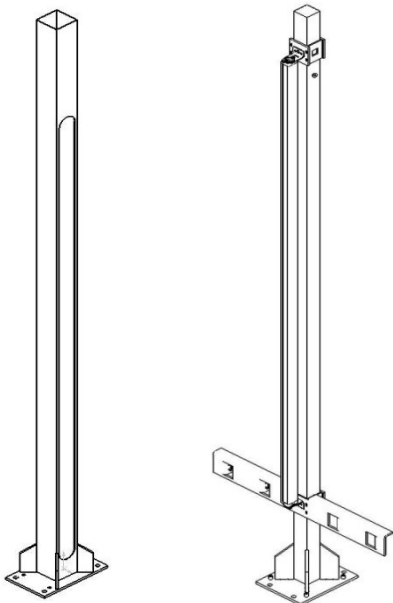
Example 3



Measurements Needed For Custom Panels

System Width (SW)	Center to center post dimension
Physical Panel Height (h)	Height of panel
Total System Height (SH)	Post and panel System Height
Floor Height (FH)	Floor to bottom of panel measurement

Light Curtain Mounts



GSM offers a broad range of different light curtain mounts depending on specific applications. Please refer to the Light Curtain Mount Brochure for more information.

BRACKETS & POST

P/N	DESCRIPTION
GPO302200LC	POLE, GSM 3000, LIGHT CURTAIN, SYSTEM HEIGHT 2200MM
GHWBRLC3000	BRACKET, LIGHT CURTAIN, GSM 3000, BLACK
GHWBRLC2000	BRACKET, LIGHT CURTAIN, GSM 2000, BLACK



When requesting quote, please provide all information up front for quicker turn around:

- **GSM 2000 Series** (pgs 3-4) **OR GSM 3000 Series** (pgs 5-6)
- **What is the System Height**
- **Which style of door** (pgs 7-10)
- **Which door handle type** (pg 11)
- **For panels:**
 - **Wire mesh**
 - **Sheet metal**
 - **Polycarbonate**
 - **Sheet metal with polycarbonate**
- **Standard RAL #'s** (pg 2) **or Custom RAL #'s**

When supplying a sketch or drawing, please make sure all items have dimensions (prefer metric).

For special items, such as but not limited to:

- Custom widths or heights of panels
- Special height or drilling of posts
- Custom Doors
- Any cutouts in panels

They must be called out and noted on the drawing with all dimensions.



GSM America
260 Durand Ave
High Point, NC 27263

T: +1 336 886 1847
F: +1 336 884 0121
E: info@gsmna.com

Website: www.gsmna.com

Represented By:

